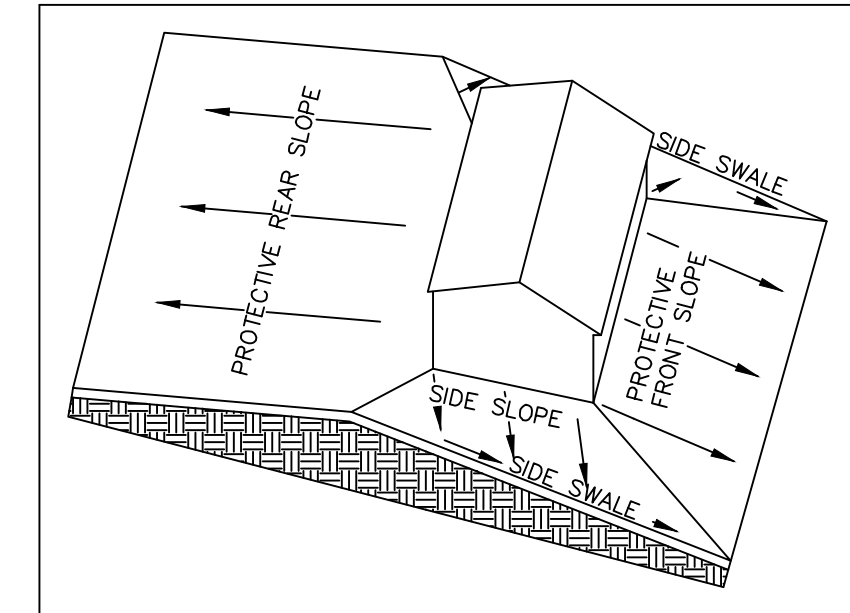
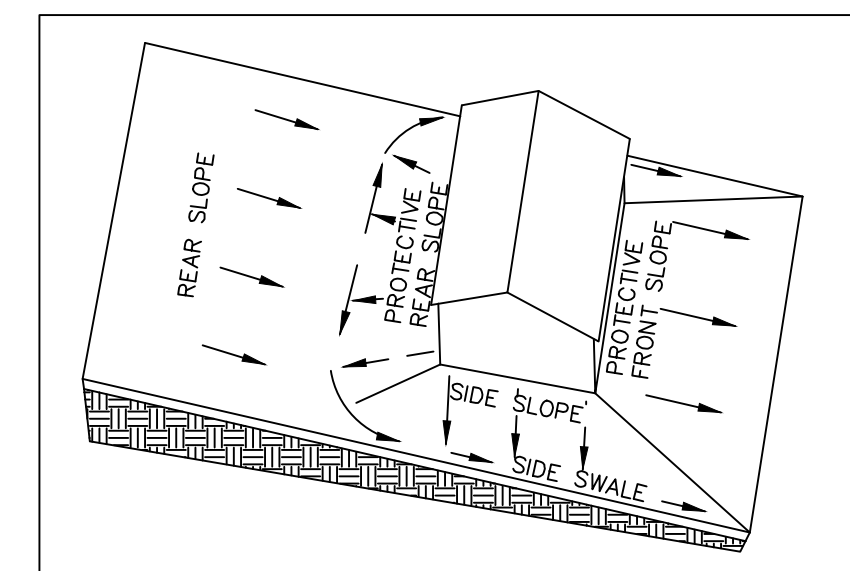
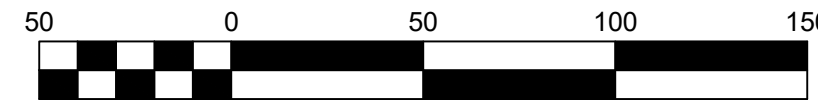


**BENCHMARKS (NAVD88)**

- BM 0 Neenah S GPS Monument  
N R/W CTH G, 300' E of East P/L  
Elev 757.30'
- BM 1 Fire Hydrant, Tag Bolt  
SE Corner Lot 171  
Elev 761.45'
- BM 2 Fire Hydrant, Tag Bolt  
Lot 196/Lot 197  
Elev 765.49'
- BM 3 Fire Hydrant, Tag Bolt  
Lot 201/Lot 202  
Elev 768.08'
- BM 4 Fire Hydrant, Tag Bolt  
Lot 206/Lot 207  
Elev 771.73'

**LEGEND**

<ul style="list-style-type: none"> <li>— CATV — CATV —</li> <li>— FO — FO —</li> <li>— OH — OH —</li> <li>— UG — UG —</li> <li>— San — San —</li> <li>— Sto — Sto —</li> <li>— E — E —</li> <li>— G — G —</li> <li>— T — T —</li> <li>— W — W —</li> <li>— F — F —</li> <li>— WL — WL —</li> <li>— RR — RR —</li> <li>— C — C —</li> <li>— 608 — 608 —</li> <li>— [607.86] — [607.86] —</li> <li>— 608.73 — 608.73 —</li> <li>— x 608.73 — x 608.73 —</li> <li>— x (608.7) — x (608.7) —</li> </ul>	<ul style="list-style-type: none"> <li>○ Sanitary MH / Tank / Base</li> <li>○ Clean Out / Curb Stop / Pull Box</li> <li>○ Storm Manhole</li> <li>○ Inlet</li> <li>○ Catch Basin / Yard Drain</li> <li>○ Water MH / Well</li> <li>○ Hydrant</li> <li>○ Utility Valve</li> <li>○ Utility Meter</li> <li>○ Utility Pole</li> <li>○ Light Pole / Signal</li> <li>○ Guy Wire / Pump</li> <li>○ Electric Pedestal</li> <li>○ Electric Transformer</li> <li>○ Air Conditioner</li> <li>○ Telephone Pedestal</li> <li>○ Telephone Manhole</li> <li>○ Ex Spot Elevation</li> <li>○ Proposed Storm Manhole</li> <li>○ Proposed Curb Inlet</li> <li>○ Prop. Catch Basin / Yard Drain</li> <li>○ Proposed Endwall</li> <li>○ Proposed Rip Rap</li> <li>○ Prop. Drainage Direction</li> <li>○ Prop. Garage Floor Elev.</li> </ul>	<ul style="list-style-type: none"> <li>□ CATV Pedestal</li> <li>□ Gas Regulator</li> <li>□ Railroad Signal</li> <li>□ Sign</li> <li>□ Tower / Silo</li> <li>□ Post / Guard Post</li> <li>□ Satellite Dish</li> <li>□ Large Rock</li> <li>□ Flag Pole</li> <li>□ Deciduous Tree</li> <li>□ Coniferous Tree</li> <li>□ Bush / Hedge</li> <li>□ Stump</li> <li>□ Marsh</li> <li>□ Soil Boring</li> <li>○ Benchmark</li> <li>■ Asphalt Pavement</li> <li>■ Concrete Pavement</li> </ul>
---	--	---



**HOUSE ELEVATIONS:**

The house elevations shall be set to provide positive drainage away from the building in all directions as shown in the above details. House elevations and driveway locations may need to vary depending on size, location, and architecture of the home. Changes to the grading plan or house elevations can be allowed only if an individual lot grading plan is prepared by a professional engineer.

**NOTES:**

1. Existing utilities shown are indicated in accordance with available records and field measurements. The contractor shall be responsible for obtaining exact locations & elevations of all utilities, including sewer and water from the owners of the respective utilities. All utility owners shall be notified by the contractor 72 hours prior to excavation. Contact Digger's Hotline (1-800-242-8511) for exact utility locations.
2. The Contractor shall verify all staking and field layout against the plan and field conditions prior to constructing the work and immediately notify the Engineer of any discrepancies.
3. Silt fence shall be installed at the toe of all newly constructed fill slopes and shall be maintained until slope vegetation is established. Silt fence shall be installed prior to site grading.
4. Inlet protection shall be installed around the upstream end of new culvert pipes and inlets, in accordance with Wisconsin DOT Standard Detail Drawing 8E10-2.
5. Stone access shall be provided to the construction site. Tracking of mud on existing streets shall be cleaned up daily.
6. Vegetation beyond slopes shall remain.
7. The contractor shall minimize the area disturbed by construction as the project is constructed. Disturbed areas shall be seeded as soon as final grade is established. Contractor shall replace topsoil and then seed, fertilize and mulch all lawn areas within 1 week of topsoil placement. Contractor shall remove all excess materials from the site. Earthwork contractors shall verify topsoil depth.
8. All sediment and erosion control devices and methods shall be in accordance with the Wisconsin DNR Technical Standards. The contractor shall make weekly inspections and inspections within 1 day of any rainfall exceeding 0.5 inches of the sediment and erosion control devices throughout construction. The contractor shall repair or maintain erosion control devices as necessary. The inspection reports shall be made available to the owner at the end of the construction or upon demand during construction.
11. Updated survey and title search have not been authorized and the boundary and easements shown may be inaccurate or incomplete.

REVISED 04/14/2020

Date:	05/17/2020
Filename:	5025enr.dwg
Author:	MDB
Last Saved by:	mitch
Page:	1.2

5/12/2020 3:42 PM J:\Projects\5025enr.dwg Civil 3D 5025enr.dwg Printed by: mitch

**DAVEL ENGINEERING & ENVIRONMENTAL, INC.**  
CIVIL ENGINEERING CONSULTANTS  
1164 Province Terrace, Menasha, WI 54952  
Ph: 920-991-1866 Fax: 920-441-0804  
www.davelpro

**DRAINAGE & GRADING PLAN**

**Castle Oak VI**  
City of Neenah, Winnebago County, WI  
For: Castle Oak Development, LLC