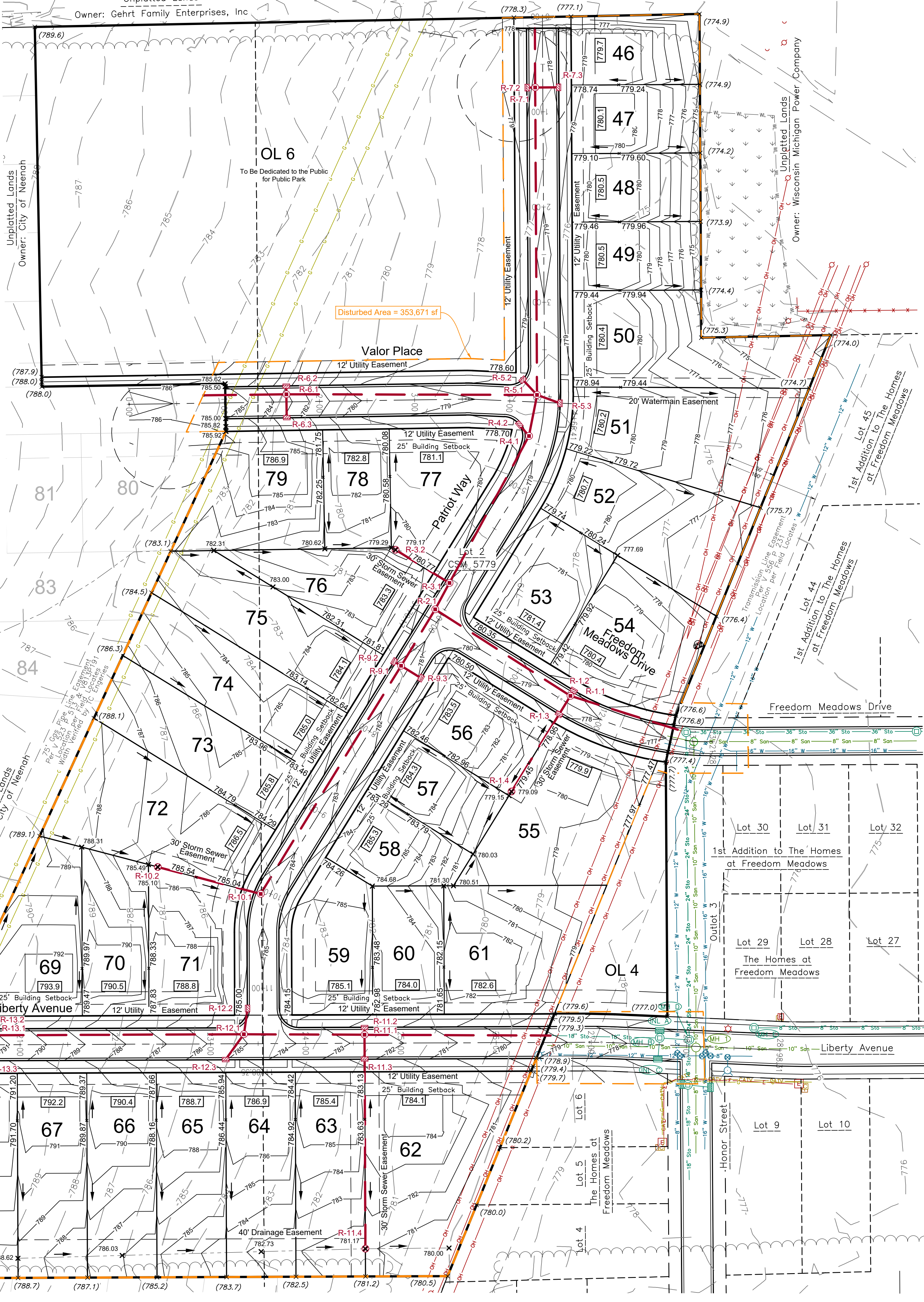


**HOUSE ELEVATIONS:**

The house elevations shall be set to provide positive drainage away from the building in all directions as shown in the above details. House elevations and driveway locations may need to vary depending on size, location, and architecture of the home. Changes to the grading plan or house elevations can be allowed only if an individual lot grading plan is prepared by a professional engineer.

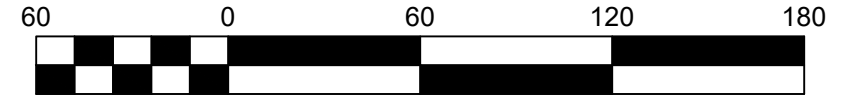


**LEGEND**

— CATV	— CATV	— Underground Cable TV	— Sanitary MH / Tank / Base	— Benchmark
— OH	— OH	— Overhead Electric Lines	— Storm Manhole	— 1" Rebar Found
— San	— San	— Sanitary Sewer	— Inlet	— 2" Rebar Found
— Sto	— Sto	— Storm Sewer	— Catch Basin / Yard Drain	— Government Corner
— W	— W	— Water Main	+799.9	— Ex Spot Elevation
— E	— E	— Underground Electric		
— 608	— 608	— Proposed Storm Sewer	— Proposed Storm Manhole	
— ---	— ---	— Proposed Contour	— Proposed Curb Inlet	
— ---	— ---	— Proposed Swale	— Prop. Catch Basin / Yard Drain	
— ---	— ---	— Proposed Culvert	— Proposed Endwall	
— [607.86]	— [607.86]	— Adjacent Plat Grade	— Proposed Rip Rap	
— 608.73	— 608.73	— Prop. Lot Corner Elevation	— Prop. Drainage Direction	
— 608.73	— 608.73	— Proposed Spot Elevation	— Prop. Garage Floor Grade at Door	
— x (608.7)	— x (608.7)	— Existing Grade		

**NOTES:**

- Existing utilities shown are indicated in accordance with available records and field measurements. The contractor shall be responsible for obtaining exact locations & elevations of all utilities, including sewer and water from the owners of the respective utilities. All utility owners shall be notified by the contractor 72 hours prior to excavation. Contact Digger's Hotline (1-800-242-8511) for exact utility locations.
- The Contractor shall verify all staking and field layout against the plan and field conditions prior to constructing the work and immediately notify the Engineer of any discrepancies.
- The contractor shall minimize the area disturbed by construction as the project is constructed. Disturbed areas shall be seeded as soon as final grade is established. Contractor shall replace topsoil and then seed, fertilize and mulch all lawn areas within 1 week of topsoil placement.
- Contractor shall remove all excess materials from the site. Earthwork contractors shall verify topsoil depth.
- See Erosion Control Plan for measures to be taken for construction.



**2nd Addition to The Homes at Freedom Meadows**  
 City of Neenah, Winnebago County, WI  
 For: Van Sistine Homes, LLC

**DRAINAGE & GRADING PLAN**

**DAVEL ENGINEERING & ENVIRONMENTAL, INC.**  
 Civil Engineers and Land Surveyors  
 1164 Province Terrace, Menasha, WI 54952  
 Ph: 920-991-1866 Fax: 920-441-0804  
 www.davel.pro